

Washing Machine

We will present to you different problems that we may encounter on a washing machine and their solutions.

Did the washing machine take the water ?If not :

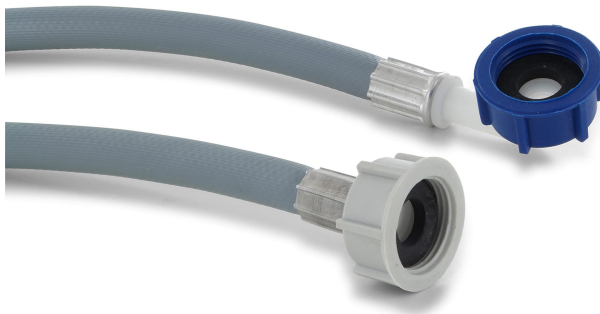
- ▶ -Solenoid valve: check if it is properly connected



How to access to the solenoid valve ? :

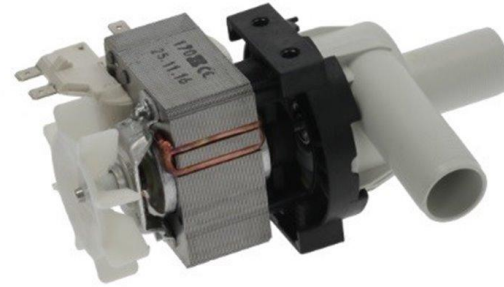
Open the top, it is connected to the arrival tube water in the back of the machine

- ▶ - arrival tube water: check if each side of the tube is not blocked



Dont evacuate ?

- ▶ Check the draining pump



How to access to the pump ? :

It is at the bottom on the right there is a filter cover remove it

Cant turning on ?

- ▶ Check the electronique card
Dissassemble the control panel and remove it



- ▶ Check the power cable

The drum dont turn ?

- ▶ Check the motor/coal engine/belt

To have an access of the motor remove the plate in the side and back if there no plate unscrew the back, remove the belt if you want to the remove the motor

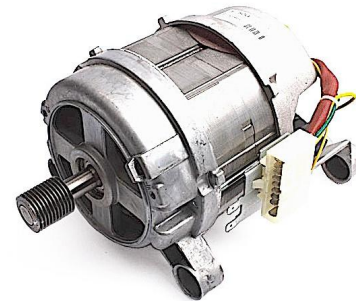
And see the coal engine or is it is broken.



Belt



coal engine



motor

The washing machine leak ?

- ▶ Check all the cable
- ▶ Check the drum/seal drum (dont need to open the machin just turn with your hand the drum and see if it made a weird noise)

